



Commodity Volatility

• Fat Cattle – \$50 to \$120 / cwt	• Corn – \$1.50 to \$9.50 / bu
• Feeder Cattle – \$50 to \$150 / cwt	• Alfalfa Hay – \$30 to \$200 / ton
• Calves – \$50 to \$150 / cwt	• Corn Silage – \$10 to \$50 / ton

Cattle Feeding Risk

- Health
- Feed Price
- Sales Price

Health

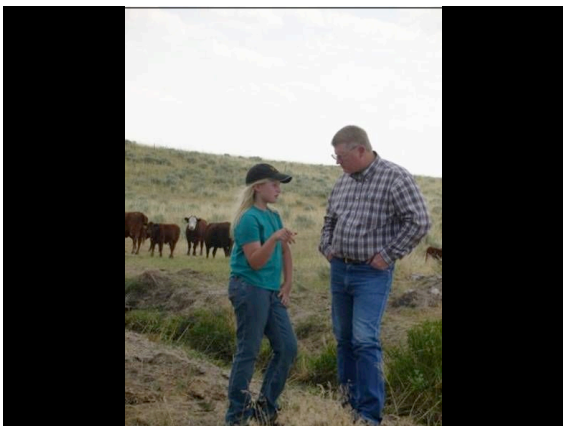
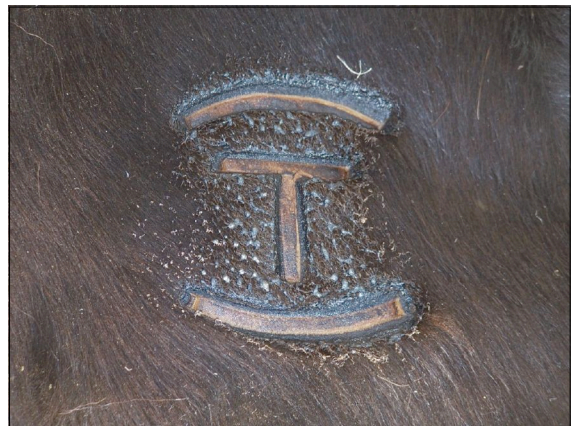
<u>Solution</u>	<u>Cost</u>	<u>Benefit</u>
• Vaccination	\$5 / hd	\$5 - 50
• Wean	\$5 / hd	\$5 - 50
• Expose to feed	\$0 / hd	\$5 - 10
• Mineral program	\$2 / hd	\$5 - 25

Feed Price

<u>Solution</u>	<u>Cost</u>	<u>Benefit</u>
• Price feed when decision is made to feed	\$0 / hd	\$0 - 300

Sales Price

<u>Solution</u>	<u>Cost</u>	<u>Benefit</u>
• Price cattle when decision is made to feed	\$0 / hd	\$0 - 300

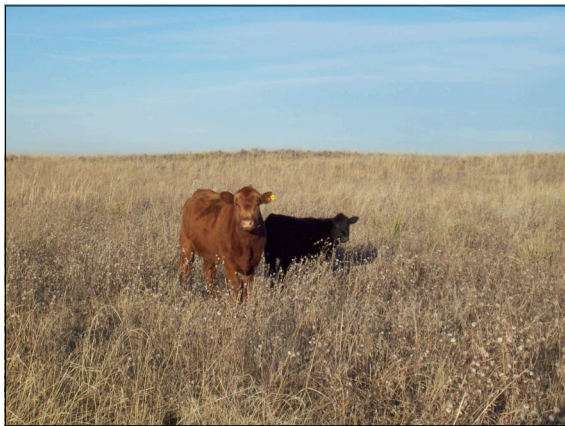


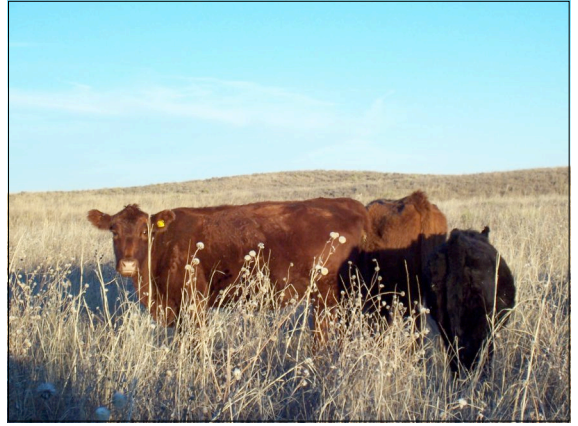
Ranching

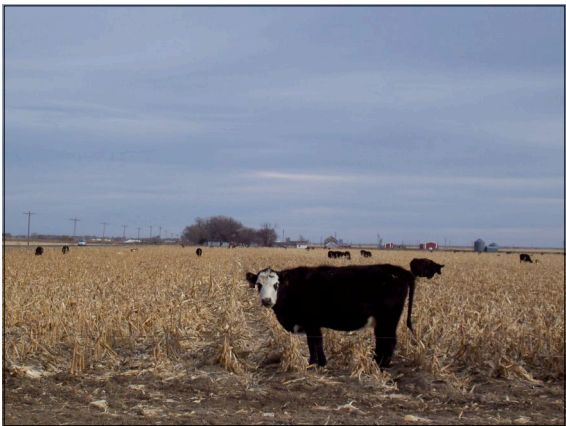
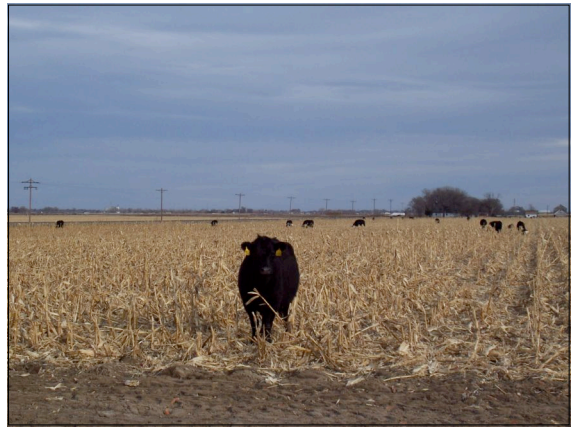
- Inputs
 - Cattle
 - Feed
 - Labor
 - Cost of funds
 - Fuel
- Outputs
 - \$ / pound of beef













Manage Input Costs

Cattle Costs

- Cow
- Stocker
- Outside Cattle

Stocker

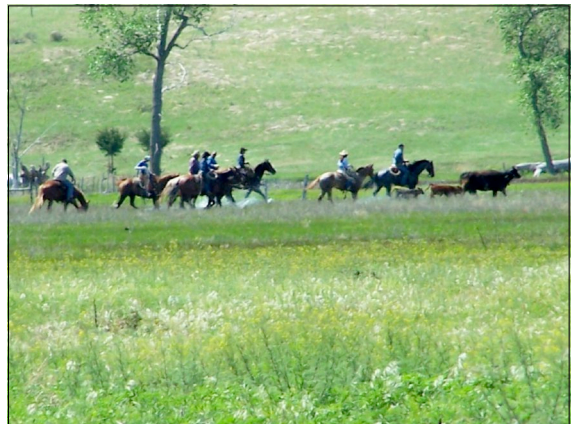
- Size
- Sex
- Health
- Timing

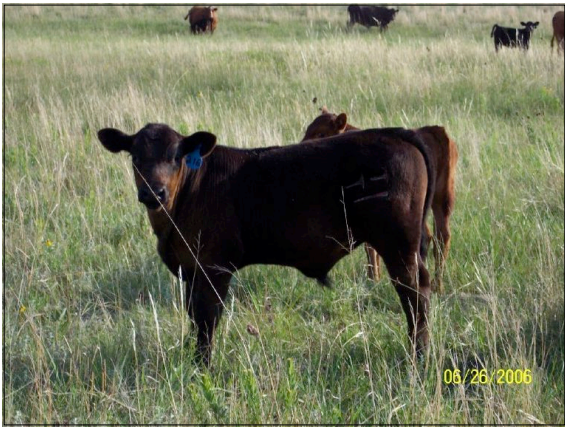
Cow Costs

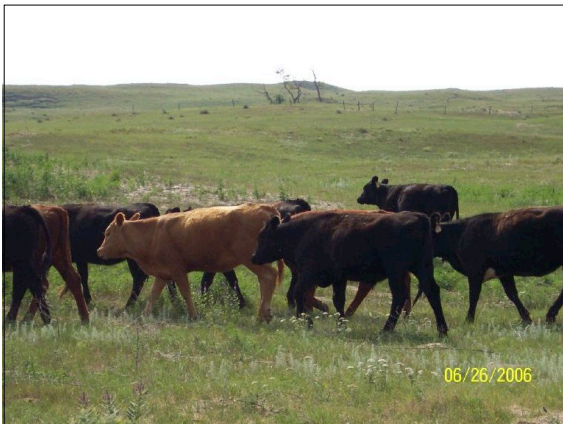
- Raise Replacement Heifers
- Purchase Replacement Heifers
- Purchase Cows
- Run Fewer Cows

Bull Costs

- Raise Replacement Bulls
- Purchase Replacement Bulls
- Run Fewer Cows







Manage Input Costs

- Feed
- Labor
- Cost of Funds
- Fuel

Manage Output Price

- Timing of Sale
- Forward Contract
- Futures
- Add Value

Keys to Success

- Take care of your family
- Take care of your land
- Take care of your cattle
- Be proud of what you do

