

International Trade Considerations for the Industry

Range Beef Cow Symposium XXI

Casper, Wyoming
December 1, 2009



James Robb
Director
www.lmic.info



Trade Considerations

- The Big Picture – Population, Income, Trade and Cattle Numbers
- Value of Trade to the U.S. Beef Industry
- Economic Conditions and Exchange Rates
- More on By-products
- More on Cattle and Beef Trade
- COOL, Traceability, Phytosanitary, Implants, Etc.

USDA Data Sources – FAS, ERS, AMS and NASS
Most Forecasts -- LMIC



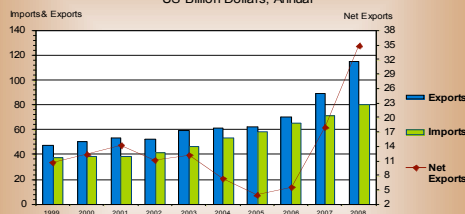
The Big Picture



Population, Income, Trade & Cattle Numbers

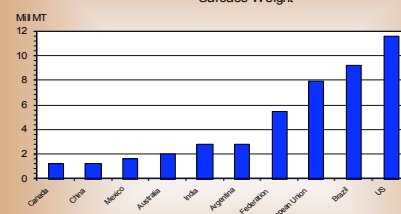
- Rate of population growth slowing, still by 2050 the projection by U.S. Bureau of Census is for 33% more people worldwide.
- Top 5 Most Populated Countries in 2050
 - India – 1,656 Million
 - China – 1,424 Million
 - U.S.A. – 439 Million
 - Indonesia – 313 Million
 - Ethiopia – 278 Million
- To meet basic needs plus growing incomes animal protein consumption will need to double by 2050 (Economist Nov 21, 2009)

AGRICULTURAL TRADE US Billion Dollars, Annual



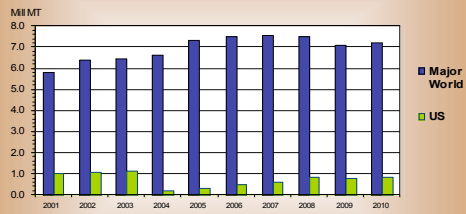
Data Source: USDA-FAS and ERS; Compiled by LMIC

2010 BEEF AND VEAL PRODUCTION Carcass Weight



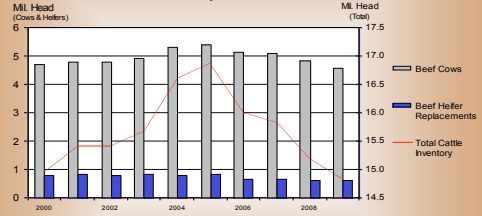
Data Source: USDA-FAS and ERS; Compiled by LMIC

BEEF EXPORTS: MAJOR WORLD Carcass Weight, Annual



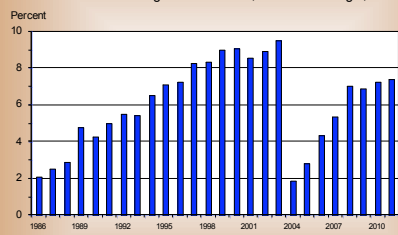
Data Source: USDA-FAS and ERS; Compiled and Forecasts by LMIC

CANADA CATTLE INVENTORY July 1, Annual



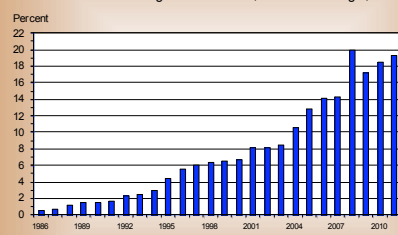
Data Source: Statistics Canada and Compiled by LMIC

U S BEEF AND VEAL EXPORTS As a Percentage of Production, Carcass Weight, Annual



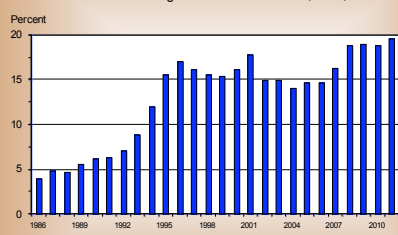
Data Source: USDA-FAS and ERS; Compiled and Forecasts by LMIC

U S PORK EXPORTS As a Percentage of Production, Carcass Weight, Annual

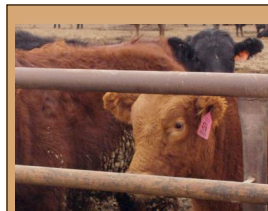


Data Source: USDA-FAS and ERS; Compiled and Forecasts by LMIC

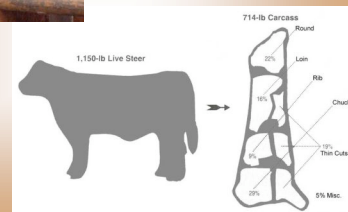
U S BROILER EXPORTS As a Percentage of Broiler Production, RTC, Annual



Data Source: USDA-FAS and ERS; Compiled and Forecasts by LMIC

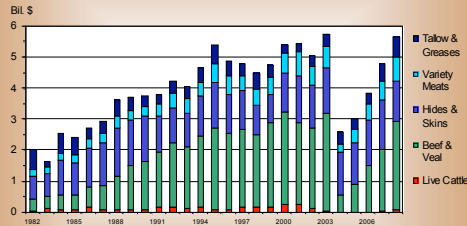


Value of Trade



U S BEEF INDUSTRY EXPORT VALUES

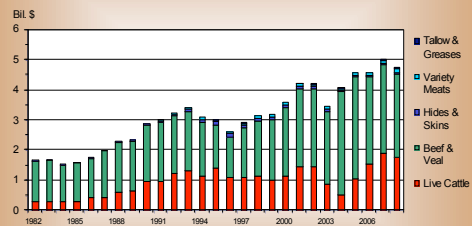
Annual



Data Source: USDA-FAS; Compiled and Analysis by LMIC

U S BEEF INDUSTRY IMPORT VALUES

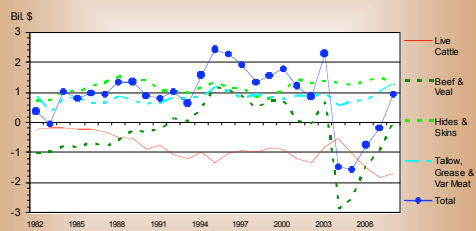
Annual



Data Source: USDA-FAS; Compiled and Analysis by LMIC

U S BEEF INDUSTRY NET EXPORT VALUES

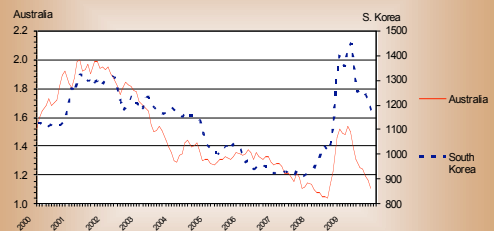
Annual



Data Source: USDA-FAS; Compiled and Analysis by LMIC

EXCHANGE RATE

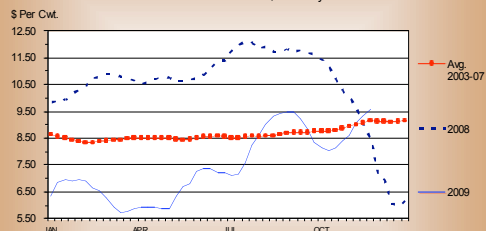
US Dollar base, Monthly



Data Source: Pacific Exchange Rate Service, Univ. of B.C., Compiled by LMIC

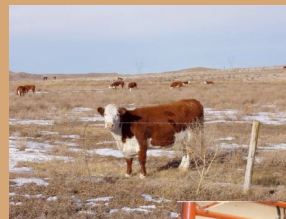
STEER HIDE AND OFFAL VALUE

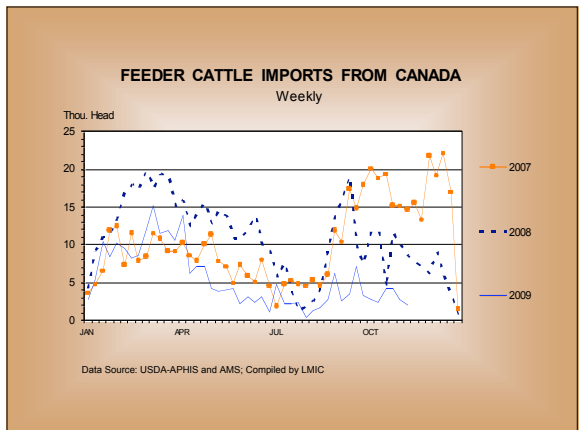
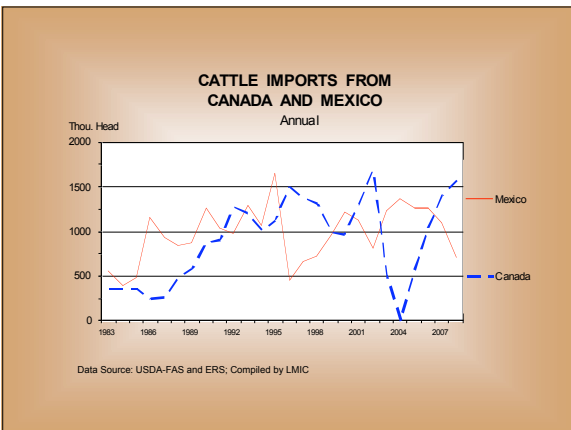
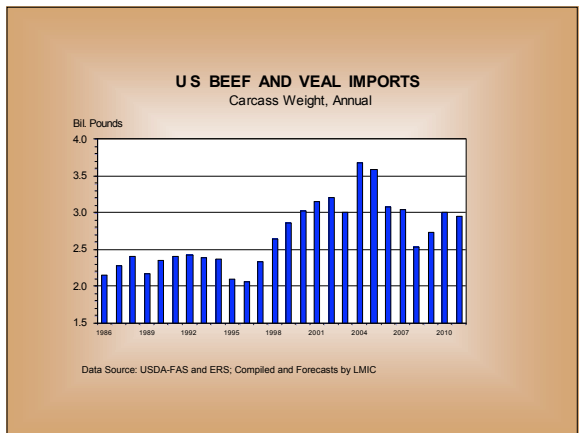
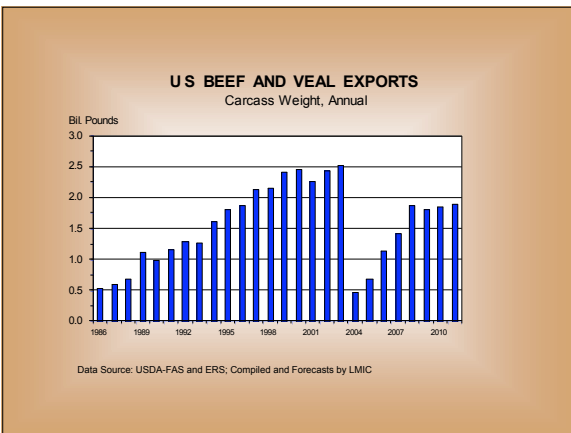
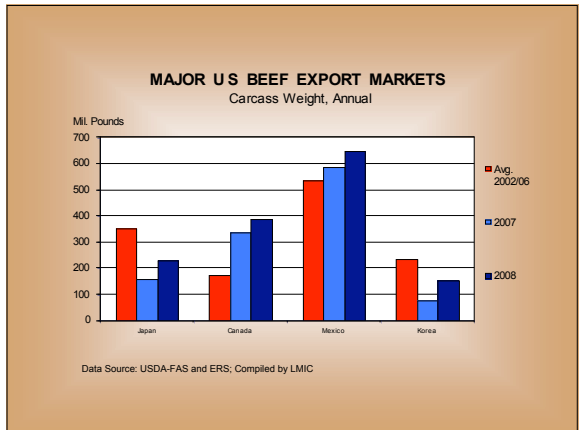
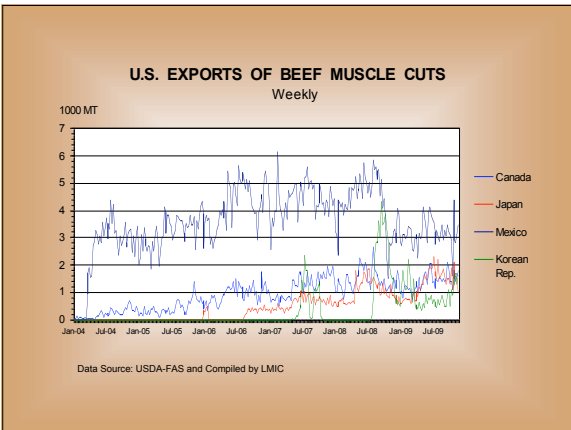
Live Animal Basis, Weekly



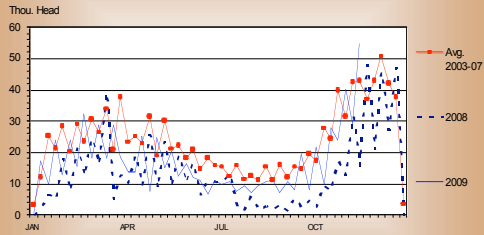
Data Source: USDA-AMS and Compiled by LMIC

More on Cattle & Beef Trade



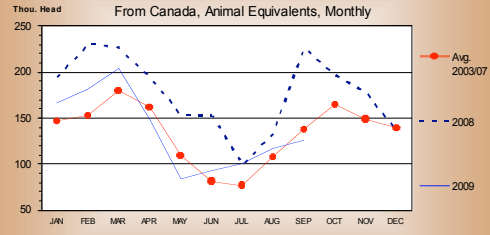


FEEDER CATTLE IMPORTS FROM MEXICO Weekly



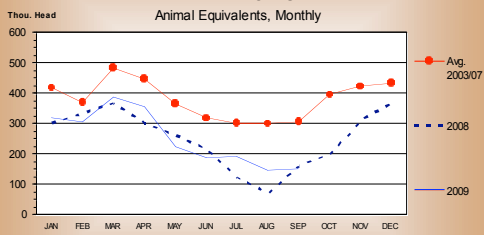
Data Source: USDA-APHIS and AMS; Compiled by LMIC

U S BEEF, VEAL & LIVE CATTLE NET IMPORTS



Data Source: USDA-FAS; Compiled and Analysis by LMIC

U S BEEF, VEAL & LIVE CATTLE NET IMPORTS



Data Source: USDA-FAS; Compiled and Analysis by LMIC

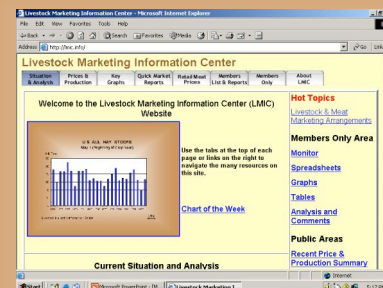


**COOL, Traceability,
Phytosanitary, Etc**



Comments– COOL, Traceability, Etc.

- Of the Three Major Market Shocks this Decade (9-11-2001, BSE in late 2003, October 2008 Credit Crisis), Two Had Major Trade Impacts on Cattle Prices
- COOL – Trade Issue is “Substantial Transformation”
- Traceability – Niche and High Value vs Commodity Beef
- Phytosanitary (BSE, H1N1) – Trade Barriers Of Choice
- Trade with Europe (implants)
- Trade with Japan (premiums for under 21 months of age)
- Foreign Markets Will Be?
- Building Foreign Demand Takes Effort



www.lmic.info

Thank You!