

**BELLE FOURCHE RIVER**  
WATERSHED PARTNERSHIP

WELCOME ABOUT BFRWP CONTACT DOCUMENTS PHOTO ALBUM SCRIPTS AND VIDEO LINKS PROJECTS

**Next Meeting**  
Date: 1/23/2013  
Time: 1:00 PM  
Where: Paul H. Hinkle Bank

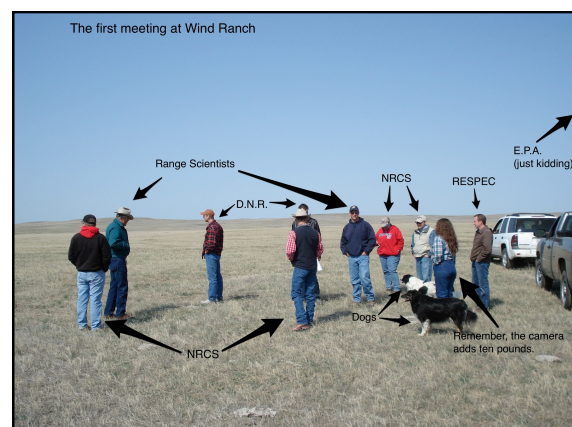
The next regularly scheduled meeting for the Belle Fourche River Watershed Partnership is Tuesday, January 23, 2013, at 1:00 PM. The meeting will be held at the Paul H. Hinkle Bank in Belle Fourche. The public is welcome to attend.

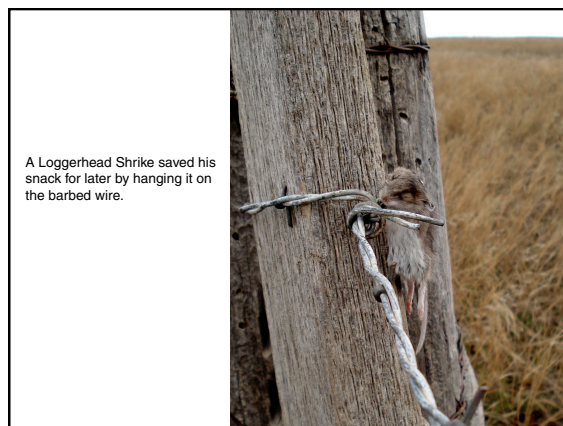
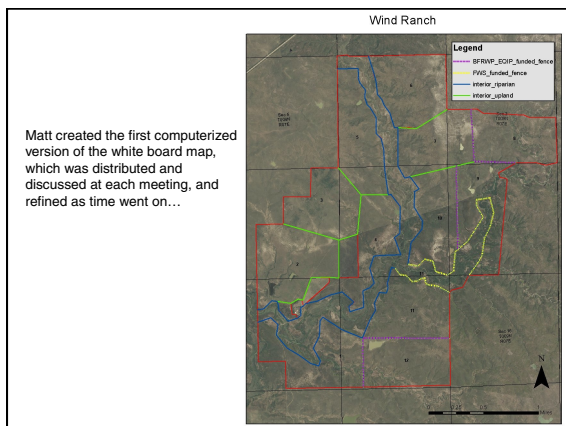
**Mission Statement**  
Welcome to the Belle Fourche River Watershed Partnership. This site is the purpose of this site is to provide the public with another method of learning about and participating in the activities that the Partnership has going on. The Partnership is continually seeking new and innovative ways to improve conservation in the watershed while promoting economic sustainability and growth.

**Current Events**  
**Announcements**  
**Greenwater Maps**  
The BFRWP has been working on a groundcover study to compile the available groundcover data in the watershed and transform it into a usable product. The first stage of this project was to create depth to aquifer maps and structural contour maps. Hard copies of these maps will be available at the Belle Fourche, Lawrence, and Elk Creek Conservation District offices. To view electronic copies of these maps click on the groundcover map link under the documents section of the website. <http://bellefourchewatershedpartnership.com/groundcover/>  
**Irrigation Improvement Project Funding**  
The BFRWP has funding available to convert flood irrigation to center pivots and/or convert open ditches to pipelines in flood irrigation systems. We encourage you to contact the Belle Fourche or Lincoln County USDA Service Center to discuss program options.

**Rainfall Simulator Trailer**  
The BFRWP has purchased a rainfall simulator trailer intended to be used as an educational tool to teach all age groups about soil erosion. The intention of the Partnership is to have the trailer available for outreach activities in the region, including ag-related school functions, county fairs, and farm shows. For more information contact us.

**Contact**  
Matt Stollberg  
Project Coordinator  
955-364-1400  
Trevor King  
Conservation Staff  
955-364-3360 ext. 3  
1837 26th Ave  
Belle Fourche, SD 57717



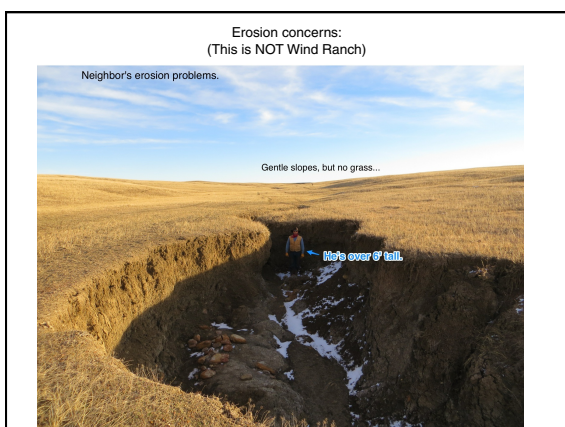


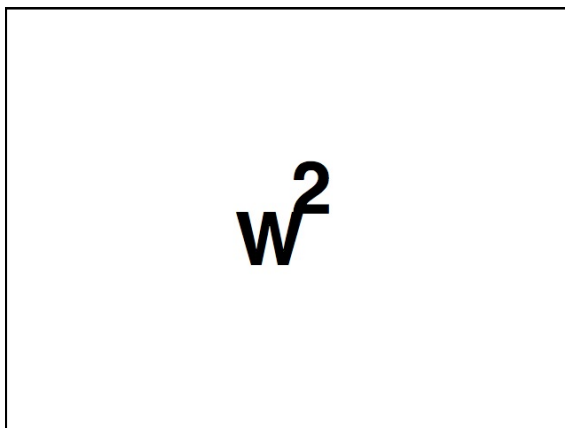
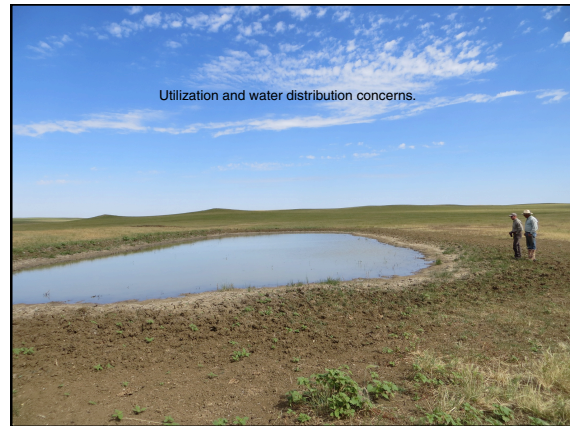


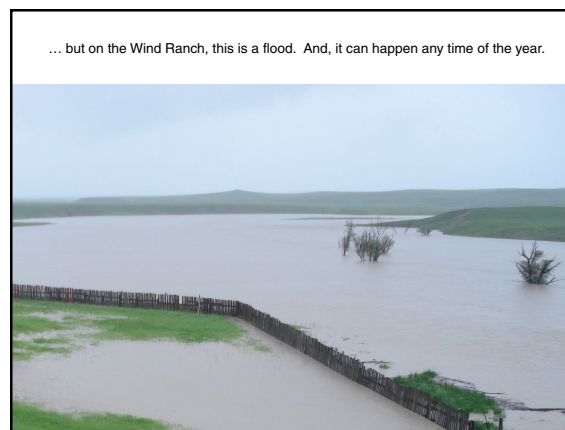
Natural Resources  
Conservation Service

Helping to develop and implement a successful conservation plan.

- Address specific resource concerns
- Help with design
- Technical assistance
- Financial assistance







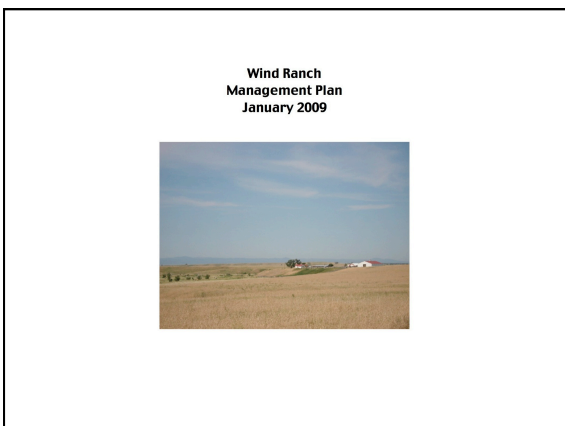
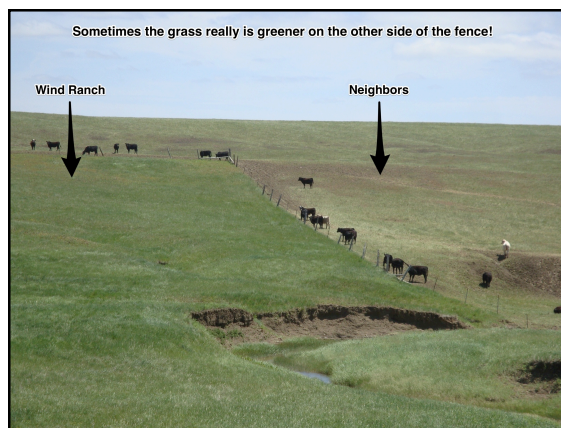


TABLE OF CONTENTS	
I. Description of Environmental Setting .....	1
II. Description of livestock and grazing operation .....	2
III. Description of livestock and grazing problems .....	3
IV. Description of livestock and grazing goals .....	4
V. Description of Management measures and practices .....	5
VI. Description of monitoring and evaluation techniques .....	6
VII. Appendix	
A. Previous Years' Production Data	
B. Stocking Rates and Forms	
C. Data Collection Forms	



