

UNIVERSITY OF NEBRASKA - LINCOLN

**GROWING A HEALTHY FUTURE**  
FOOD • FUEL • WATER • LANDSCAPES • PEOPLE

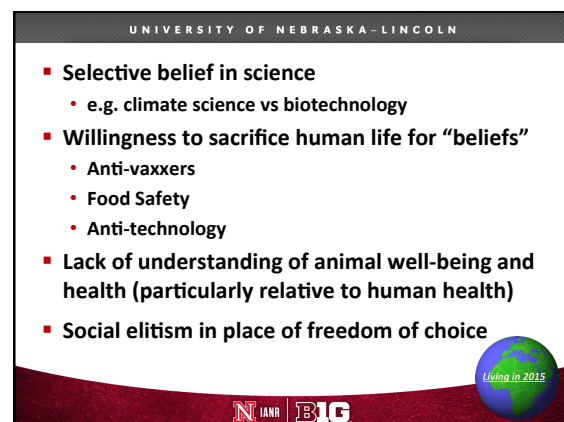
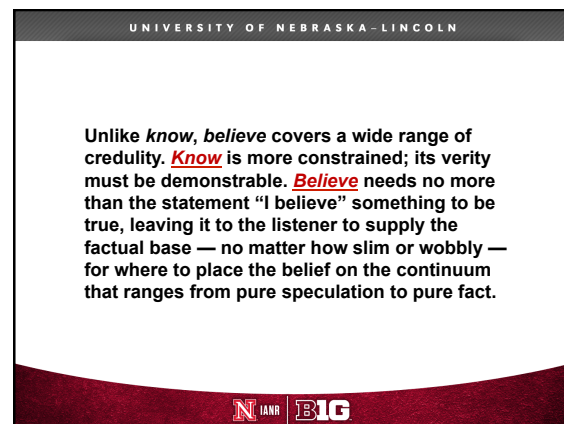
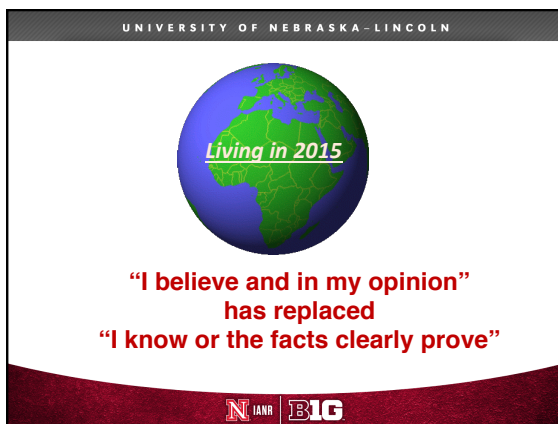
- PCAST (Ag Research, Antibiotics)
- AGree
- Chicago Council on Global Affairs
- STEM Ag and Food Council
- Council on Competitiveness
- Foundation for Food and Ag Research
- NAAAS (Animal Ag / Science)
- NNMI (Food Factory of the Future)

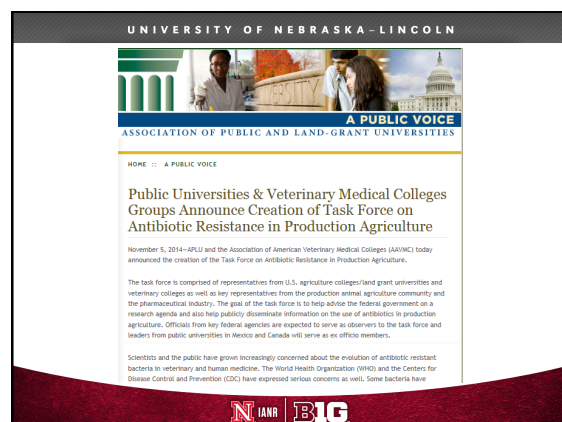
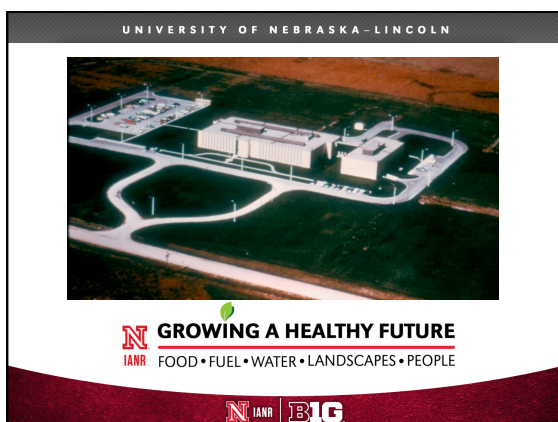
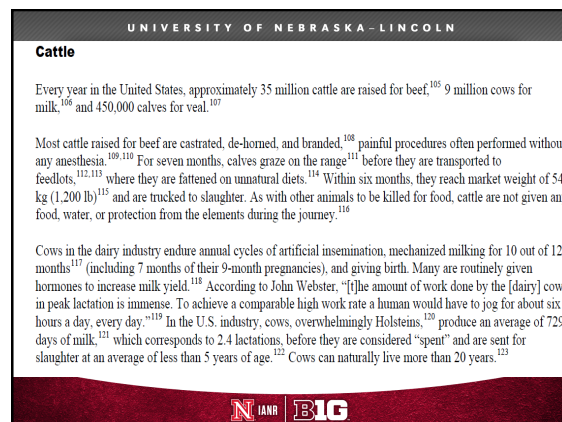
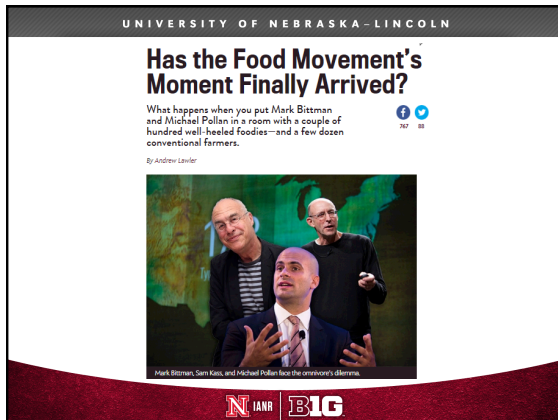
UNIVERSITY OF NEBRASKA - LINCOLN

**Feeding the World**  
By 2050 we'll need to feed two billion more people. How can we do that without overwhelming the planet?

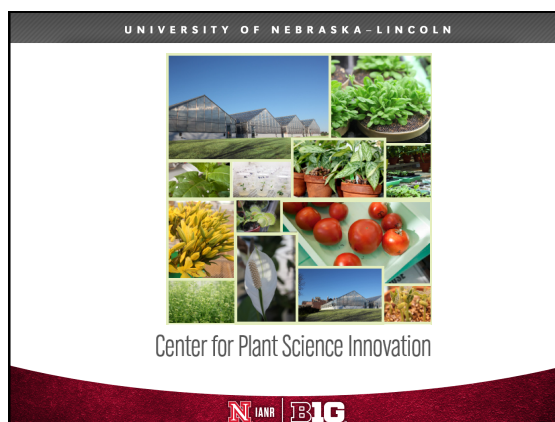
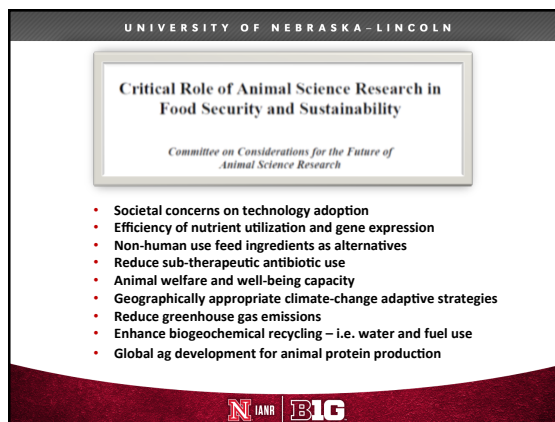
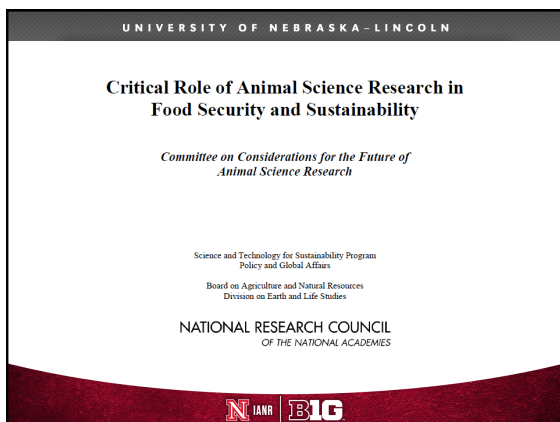
PHOTOGRAPHS BY GEORGE STEINMETZ

**Building agricultural research**












UNIVERSITY OF NEBRASKA–LINCOLN

**METAGENOME ANALYTICS**



- A start-up bioinformatics company led by Andy Benson, W.W. Marshall Distinguished Professor
- MGA partners:
  - Khalid Sayood, professor of electrical and computer engineering
  - Rohita Sinha, postdoctoral researcher
  - Ufuk Nalbantoglu, Erciyes Univ in Turkey
  - UNL graduate The “Ty” Nguyen of Professional Computer Solutions

**N IANR | BIG**

UNIVERSITY OF NEBRASKA–LINCOLN



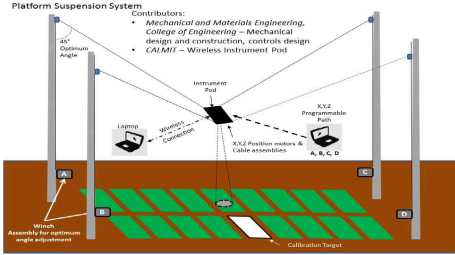
**PHENO-Summit**  
October 2015

**NEBRASKA INNOVATION CAMPUS**

**N IANR | BIG**

UNIVERSITY OF NEBRASKA–LINCOLN

**Platform Suspension System**




Contributors:

- Mechanical and Materials Engineering, College of Engineering – Mechanical design and construction, controls design
- CALMII – Wireless Instrument Pod

**N IANR | BIG**

UNIVERSITY OF NEBRASKA–LINCOLN

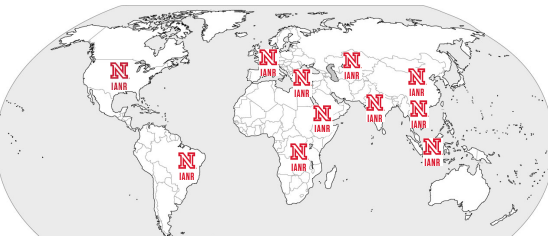
**And We Need to Work Globally!**



**N IANR | BIG**

UNIVERSITY OF NEBRASKA–LINCOLN

**Where We Are**

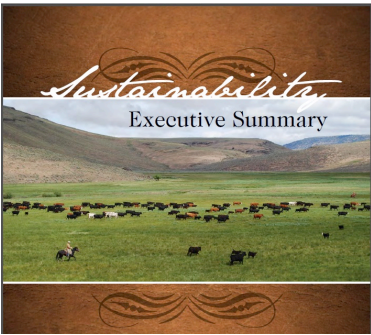


**CHINA** (Northwest A&F, China Ag, IWHR), **BRAZIL** (ESALQ, CAPES, BSMP, UFRGS), **INDIA** (IARI, MSSRF, JAIN, NIFTM), **TURKEY** (Ataturk University), **NETHERLANDS** (UNESCO-IHE), **ETHIOPIA**, **MIDDLE EAST** (USAID/MENA, NASA Drought), **TANZANIA** (CIRCLES), **VIETNAM** (LMPPH-Harvard Kennedy School), **INDONESIA** (Bogor, USB),

**N IANR | BIG**

UNIVERSITY OF NEBRASKA–LINCOLN

*Sustainability*  
**Executive Summary**



**N IANR | BIG**



